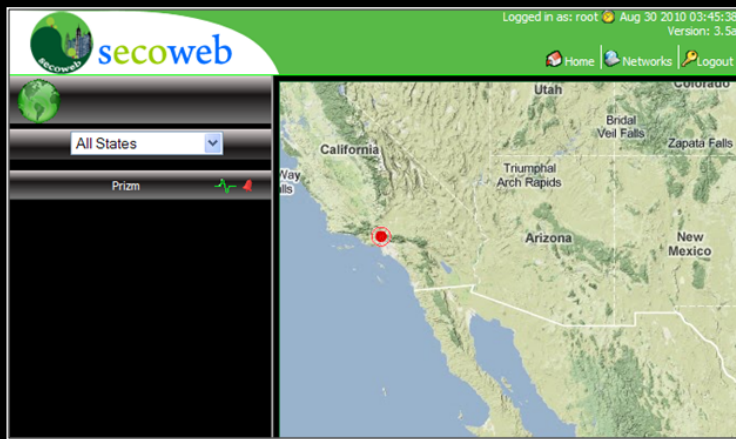


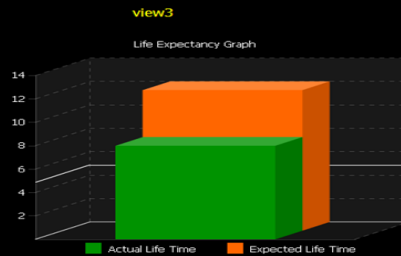
# SECOWEB™

## Facilities Management System



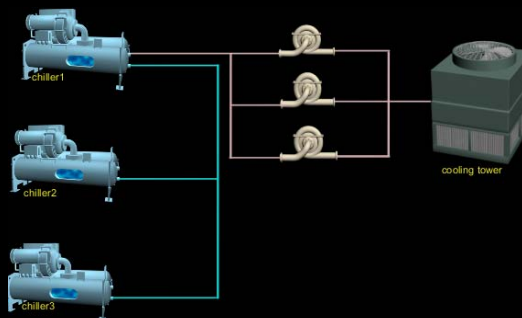
[www.tiechesystems.com](http://www.tiechesystems.com)

SECOWEB web server combines simple to use dynamic front end graphics with industry leading real time tools. Using its built-in XML IP capability, SECOWEB can communicate on Wide Area Networks (WAN), which are connected over Intranet or Internet.



SECOWEB's Enhanced Energy Efficiency (E3) module leverages its Advanced Reporting feature to allocate, analyze and present data in an organized and informative way through easy to use & easy to configure actionable energy reports. The reports are delivered to any PC or Smart Phone automatically keeping the information you need at your finger tips.

- Real time Control & Monitoring
- Intelligent Alarm Management
- Dynamic System & Area Graphics
- Network Data Sharing & Control
- Enhanced Data Logging & Trending
- Graphical Program Trace Elements
- Third Party Equipment Integration



### Applications

- ◆ Energy Management
- ◆ Building Automation
- ◆ Power Monitoring
- ◆ Asset Management
- ◆ Access Control
- ◆ I.A.Q. Management
- ◆ People Counting
- ◆ Alarm Monitoring



### Supported Platforms

Window XP Professional  
Windows 7 Professional

### Communication & Data

TCP / IP  
XML

### System Requirements

2GB RAM (min)  
1.66GHz (min)  
200GB Hard Drive (min)



## TIECHE

Engineered Systems

[www.tiechesystems.com](http://www.tiechesystems.com)